

THE Q-BIK MOBILE BUFFET SYSTEM

WELCOME THE TRIO : SEAMLESSLY BLEND AND INTEGRATE

Q-BIK

THE
HUB

20ZZ
MODULAR FLAT PACK



EASTERN
TABLETOP



Corporate Headquarters, Showroom & Warehouse:
Eastern Tabletop Manufacturing Company Inc.
50 Ingham Avenue
Bayonne NJ 07002

Telephone:
1-718-240-9595

Toll Free:
1-888-422-4142

Email:
sales@easterntabletop.com

Visit www.EasternTableTop.com for full product details.

THIS ISN'T JUST A BUFFET UPGRADE; IT'S AN INDUSTRY EYE-OPENER.

Get ready for a groundbreaking revelation in the industry – the sensational **Q-BIK!** Standing tall alongside the **THE HUB** and the **2022** MODULAR FLAT PACK, it seamlessly integrates into our dynamic collapsible buffet family.

Envision the possibilities: interchangeable tiles effortlessly swapping between all three units, and stunning color panels creating a seamless blend with any decor.

WE'RE PROUD TO INTRODUCE IO

- Integrating Operations
- Indoor and Outdoor
- Innovative Options

Brace yourself for a thrilling new era in buffet experience!

Q-BIK CAPABILITIES ARE AS IMPRESSIVE AS THEY ARE EXTENSIVE.

INDOOR - OUTDOOR

[Watch live video
for this product.](#)

The **Q-BIK** is the ultimate solution for both Indoor & Outdoor versatility


- Heavy-duty swivel casters, effortlessly glide from carpet to tile, seamless transitioning between indoor and outdoor spaces.
- Connecting adapter easily hooks onto Q-Bik stands, creating the perfect buffet setup for any event.



FROM DISPLAY TO ACTION

The **Q-BIK** extends from a singular display to a full buffet in mere minutes

- A vast selection of panels to choose from
- Set up and collapse your buffet in any area

 Watch live video for this product.




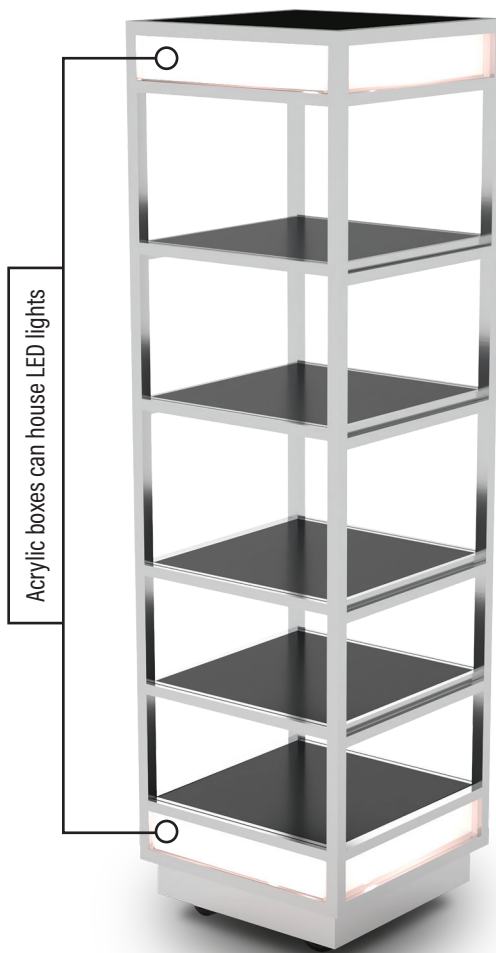
RAISE THE BAR WITH EFFORTLESS ELEGANCE

Cheers to innovation, cheers to unforgettable moments! Our modular buffet table seamlessly transforms into a bar with a simple switch of panels and the addition of a bar top.

No hardware, no complicated installation - just pure sophistication at your fingertips with the **Q-BIK** display.

- Shelves hook onto multiple levels
- No hardware required

 Watch live video for this product.



Acrylic boxes can house LED lights

Q-BIK
5 TIER DISPLAY #ST1830G

22 1/4" x 22 1/4" x 80 3/8" H

Glass Shelves #ST1830G
Wooden Shelves #ST1830W

- 18/10 Stainless Steel
- Indoor/Outdoor Use



Watch Q-BIK
set-up video



Q-BIK
4 TIER DISPLAY #ST1820G

22 1/4" x 22 1/4" x 69 3/8" H

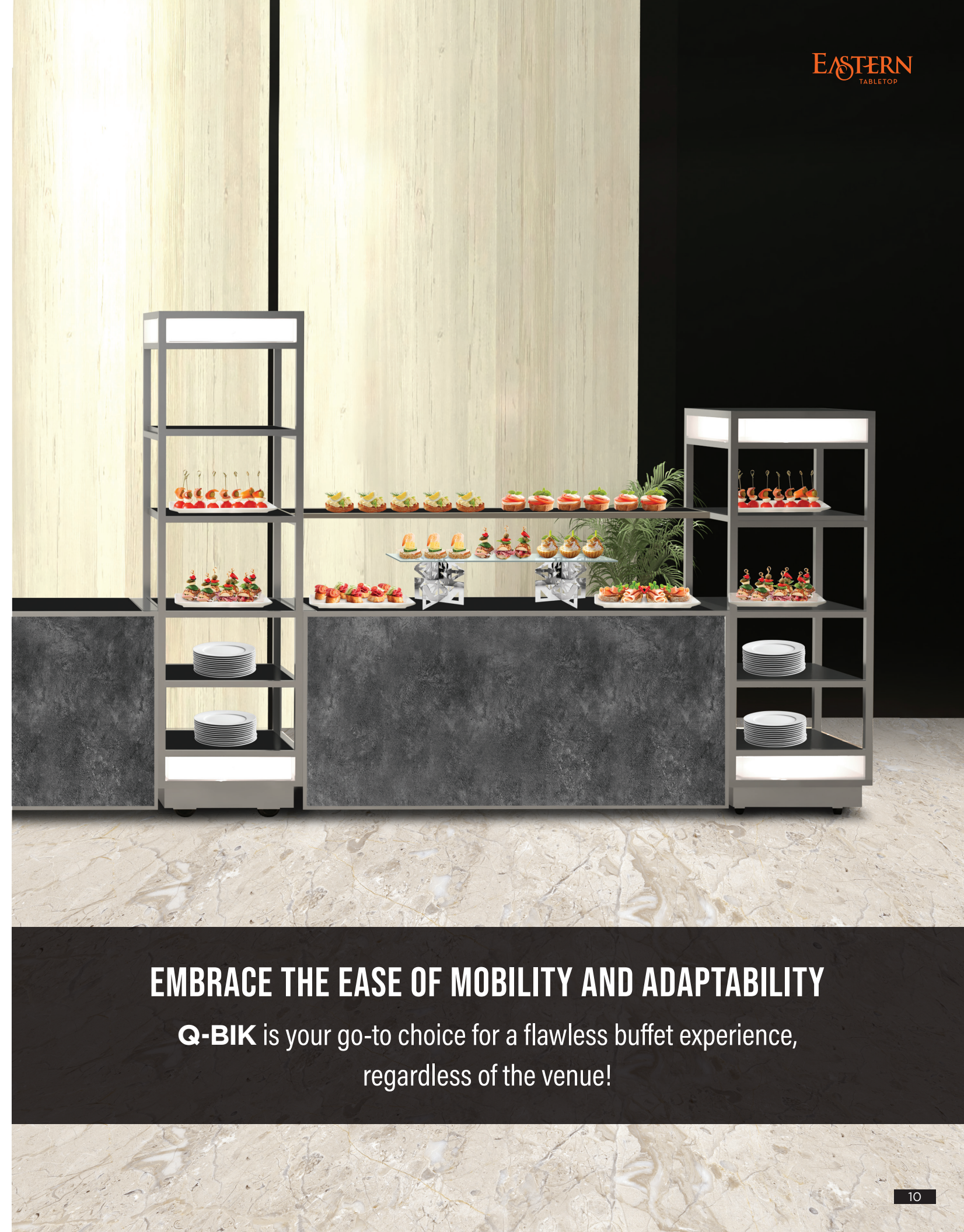
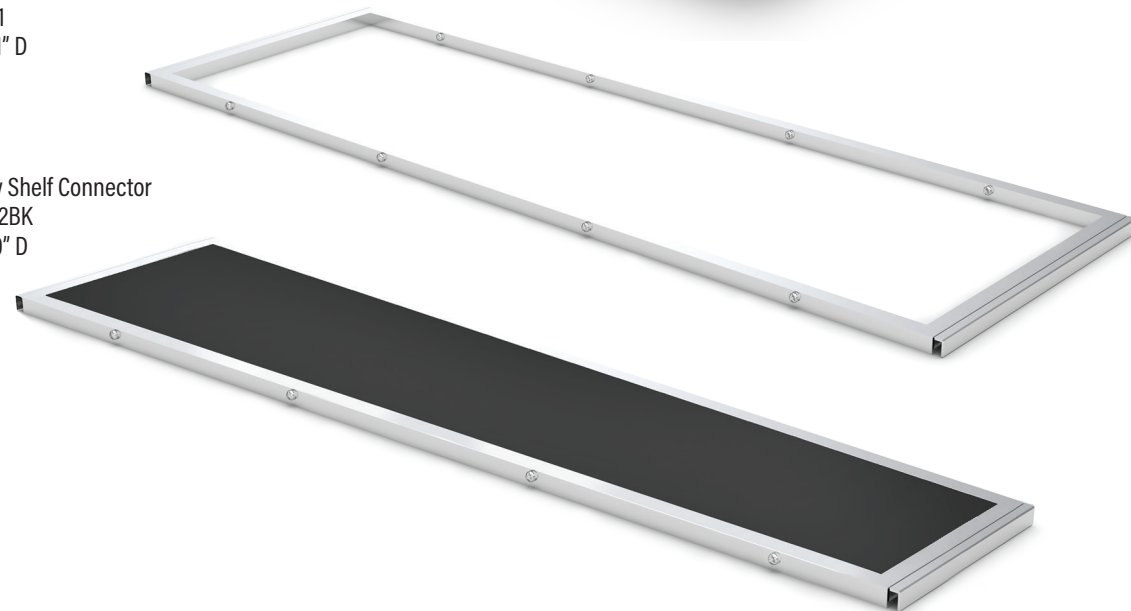
Glass Shelves #ST1820G
Wooden Shelves #ST1820W

- 18/10 Stainless Steel
- Indoor/Outdoor Use

Heavy duty locking
caster wheels

Stainless Steel Shelf Connector
#ST1821
63" x 21" D

Narrow Shelf Connector
#ST1822BK
63" x 10" D



EMBRACE THE EASE OF MOBILITY AND ADAPTABILITY

Q-BIK is your go-to choice for a flawless buffet experience,
regardless of the venue!

FROM DYNAMIC CONFIGURATIONS TO LIMITLESS CREATIVITY

Transform your space with ease and style.
Your vision, your display - **Q-BIK** makes it possible!



Watch Q-BIK
set-up video

○ U-SHAPED



○ L-SHAPED



○ X-SHAPED





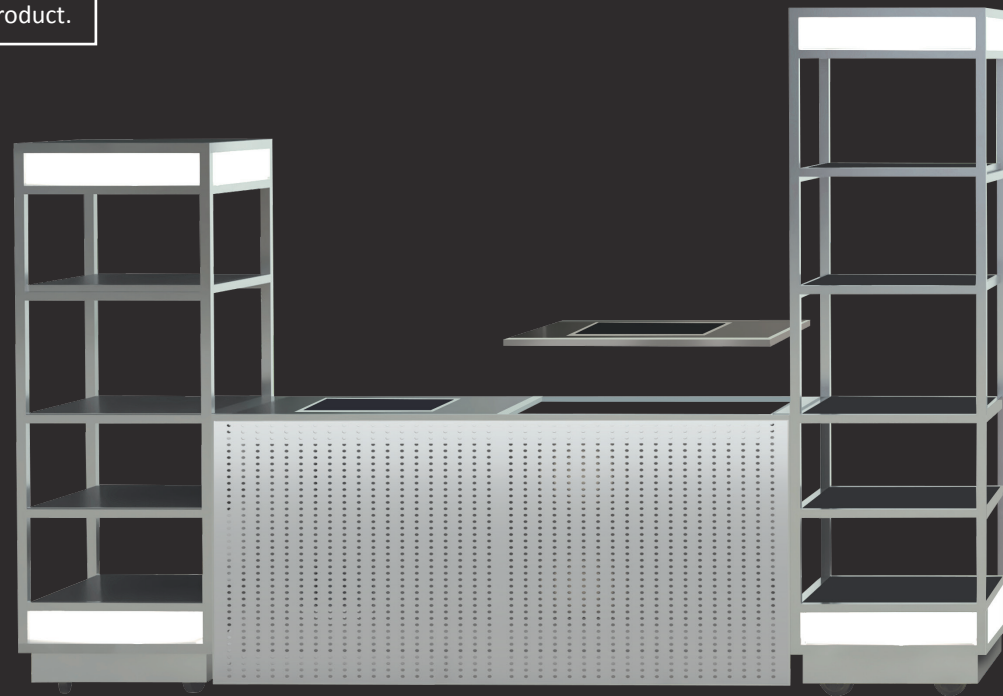
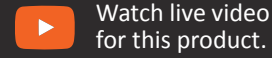
SEAMLESS HARMONY, INFINITE VERSATILITY

Experience total integration with the **Q-BIK**, **THE HUB**, & **Z0ZZ**
as you easily swap tiles and redefine possibilities.

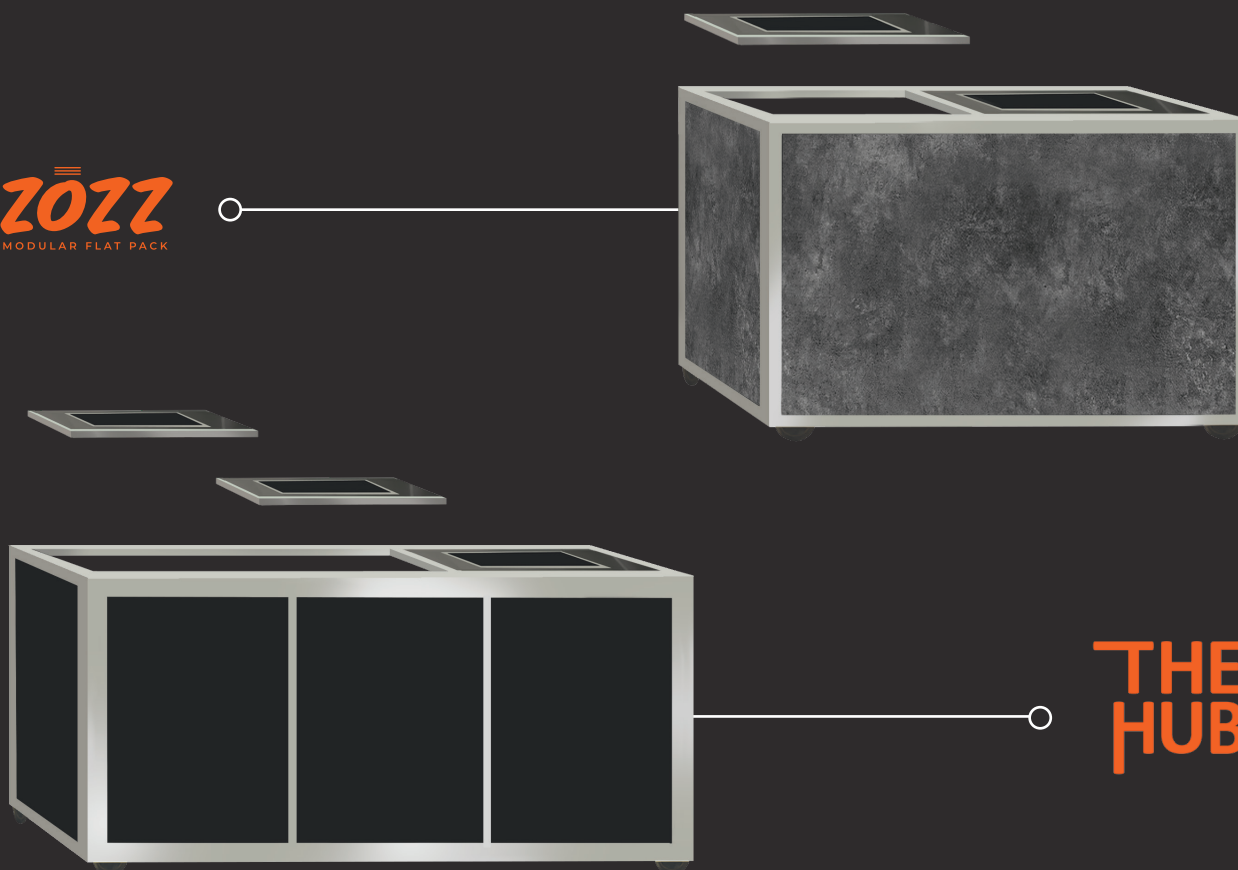
- Tiles used for both the HUB and Z0ZZ tables, also fit into the Q-Bik connector.
- No hardware required

[Watch live video
for this product.](#)

Q-BIK DISPLAY



2022
MODULAR FLAT PACK

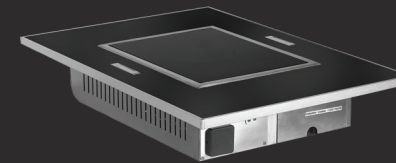


THE HUB

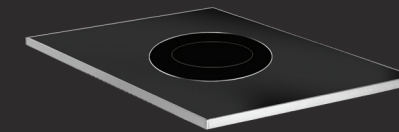
EASTERN
TABLETOP

TILES

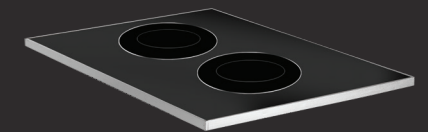
Complete selection of tiles available on EasternTabletop.com



INDUCTION TILE
#ST5917BIND



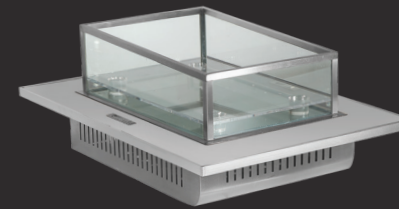
SINGLE
WARMING INDUCTION
#ST59801INDB



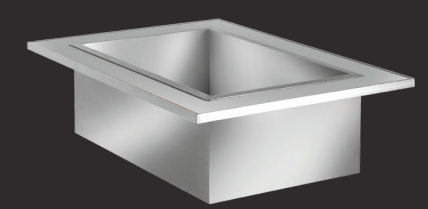
DOUBLE
WARMING INDUCTION
#ST59802INDB



OMELETTE INDUCTION
#ST59380TB



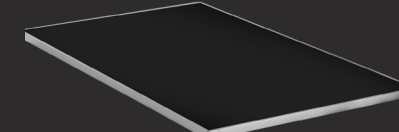
RAISED ICE BIN
#ST5930BIB



DROP-IN ICE BIN
#ST5925DIB



BUTCHER BLOCK
#ST5933



TILE INSET
#ST5935WPT



PLATE DISPENSER
#ST5972PR

FRONT & BACK PANELS

63" x 31 1/2" | Hooks onto **Q-BIK** stainless steel shelf connector





Corporate Headquarters, Showroom & Warehouse:

Eastern Tabletop Manufacturing Company Inc.
50 Ingham Avenue
Bayonne NJ 07002

Telephone:

1-718-240-9595

Toll Free:

1-888-422-4142

Email:

sales@easterntabletop.com

Visit www.EasternTableTop.com for full product details.



EASTERN
TABLETOP